



ExtremeCloud IQ Release Notes

24.1.0

9038026-00 Rev AB
February 2024



Copyright © 2024 Extreme Networks, Inc. All rights reserved.

Legal Notice

Extreme Networks, Inc. reserves the right to make changes in specifications and other information contained in this document and its website without prior notice. The reader should in all cases consult representatives of Extreme Networks to determine whether any such changes have been made.

The hardware, firmware, software or any specifications described or referred to in this document are subject to change without notice.

Trademarks

Extreme Networks and the Extreme Networks logo are trademarks or registered trademarks of Extreme Networks, Inc. in the United States and/or other countries.

All other names (including any product names) mentioned in this document are the property of their respective owners and may be trademarks or registered trademarks of their respective companies/owners.

For additional information on Extreme Networks trademarks, see: www.extremenetworks.com/about-extreme-networks/company/legal/trademarks

Open Source Declarations

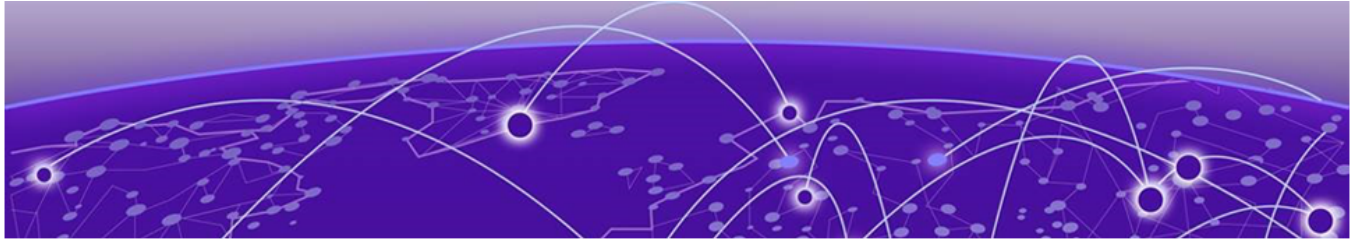
Some software files have been licensed under certain open source or third-party licenses.

End-user license agreements and open source declarations can be found at: <https://www.extremenetworks.com/support/policies/open-source-declaration/>



Table of Contents

General Release Information.....	4
Current Release: 24.1.0.....	4
ExtremeCloud IQ Public IP Address Blocks.....	4
Supported IQ Engine 10.6.6 Software.....	5
New Features in 24.1.0.68.....	6
Addressed Issues in 24.1.0.68.....	13
Known Issues in 24.1.0.68.....	14
Device Support Information.....	18
Controllers.....	18
Access Points.....	19
Universal Hardware.....	19
IQ Engine (Cloud Native).....	20
ExtremeWireless WiNG.....	21
Extreme Wireless.....	22
Switches.....	22
Universal Hardware.....	23
ExtremeXOS.....	29
VOSS.....	32
IQ Engine (Cloud Native).....	33
Dell EMC.....	34
Routers.....	34
ExtremeCloud IQ Site Engine.....	35
ExtremeCloud IQ CoPilot.....	38
ExtremeCloud A3.....	39
Supported Browsers and Display Settings.....	39
Desktop and Mobile Browser Support.....	39
Display Settings.....	39



General Release Information

Current Release: 24.1.0

February 2024

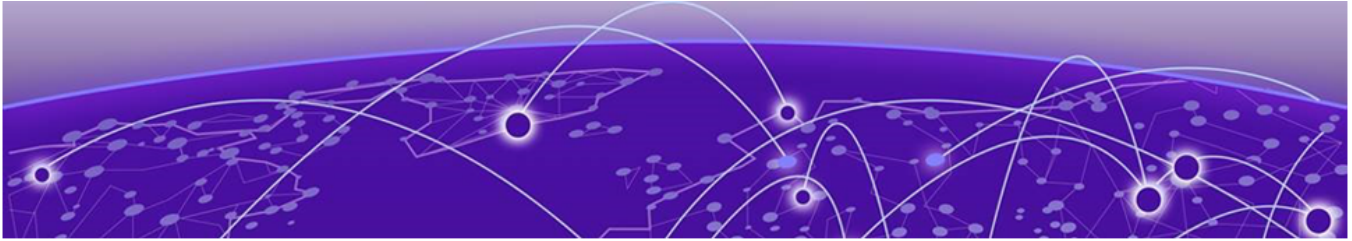
ExtremeCloud IQ Public IP Address Blocks

Data Center	IP Block	Addresses and Ports
Global Data Center (GDC)	44.234.22.92/30 18.194.95.0/28 34.253.190.192/26 3.234.248.0/27	
Australia (AUS)	13.210.3.192/28	Firewall Address and Port Information
Azure, Canada Central (ACA)	20.151.64.48/28	Firewall Address and Port Information
Azure, US East (AVA)	52.226.89.112/28	Firewall Address and Port Information
Brazil (BR)	18.228.70.16/28	Firewall Address and Port Information
Germany (FRA)	3.67.81.96/27 18.194.95.0/28	Firewall Address and Port Information
India (IN)	13.232.67.8/29 3.6.70.64/29	Firewall Address and Port Information
Ireland (IE)	34.253.190.192/26	Firewall Address and Port Information
Japan (JP)	18.176.203.112/29 13.231.6.232/29	Firewall Address and Port Information
Netherlands (NL-GCP)	34.91.82.64/27	Firewall Address and Port Information
Singapore (SG-GCP)	34.87.158.80/28	Firewall Address and Port Information
Spain (ES)	18.101.49.128/27	Firewall Address and Port Information
Sweden (SE)	13.48.186.224/29 13.48.4.184/29	Firewall Address and Port Information
Switzerland (ACH)	51.107.1.192/28	Firewall Address and Port Information
United Arab Emirates (UAE)	3.28.159.128/28	Firewall Address and Port Information

Data Center	IP Block	Addresses and Ports
United Kingdom (UK-AGB)	51.143.233.80/28	Firewall Address and Port Information
US East (VA)	34.202.197.0/26 44.192.245.0/26 3.234.248.0/27	Firewall Address and Port Information
US East 2 (VA2)	34.202.197.0/26 44.192.245.0/26 3.234.248.0/27	Firewall Address and Port Information
US-Iowa (IA-GCP)	34.67.130.64/27	Firewall Address and Port Information
US Ohio (OH)	3.145.235.64/26	Firewall Address and Port Information

Supported IQ Engine 10.6.6 Software

See the [Release Notes](#) for information about the current release of IQ Engine.



New Features in 24.1.0.68

Device OS Support

This release adds support for the following device operating systems:

- **ExtremeXOS/Switch Engine:**
 - IQ Engine 10.6.6
 - 32.6.2 Image Download Support
 - 32.6.2 Onboard, Monitor, Config, Image Drag & Drop Support
 - 31.7.2.28 Patch 1-X Image Download Support
 - 31.7.2.28 Patch 1-X Onboard, Monitor, Config, Image Drag & Drop Support
 - EXOS iqagent 0.7.63 – Switch Engine supports IQagent 0.7.63

- **VOSS/Fabric Engine:**

VOSS iqagent 0.7.10 – Fabric Engine now supports IQagent 0.7.10

New Hardware Support

There is no new hardware support in this release.

Table 1: New Features in 24.1.0.68

Feature ID	Feature	Description
XIQ-938	Enhance default configuration of Bonjour Gateway and filter base on tree	Bonjour Gateway enhancements include the ability to specify a realm either at the floor level or an entire building. In addition, Bonjour advertisements can now be limited and contained to the realm they reside in.
XIQ-1549	Support DHCP Snooping VLAN Attributes (Switch Engine)	<p>ExtremeCloud IQ supports the configuration of DHCP Snooping for Switch Engine devices. You can enable DHCP Snooping with or without the action to drop rogue DHCP server packets. Also, enable a port type as a DHCP Snooping trusted port, allowing server-side DHCP packets (UDP; destination port 68) to be transmitted.</p> <p>You can enable DHCP Snooping for a VLAN within VLAN attributes or for all VLANs within a switch template or device level configuration.</p> <p>Note: DHCP Snooping defined within VLAN attributes takes precedence.</p> <p>DHCP lease time and DHCP server port details are displayed for wired clients when attached to a switch with DHCP Snooping enabled.</p> <p>Note: Switch Engine version 32.6.2.68 is required</p>
XIQ-3439	Support Network Policy and Device Level VLAN Attributes Configuration for Switch Engine	<p>ExtremeCloud IQ supports the configuration of optional VLAN attributes for Switch Engine devices. You can define: VLAN ID, VLAN name, IGMP Snooping per VLAN, and DHCP Snooping per VLAN. You can also set the VLAN to VLAN deployment enabled, which allows creating the VLAN on the switch when the VLAN is not defined in a port type.</p> <p>The attributes can be defined in a network policy, switch template, or device level configuration.</p>
XIQ-3542	AP5010: Support for Dual Ethernet Redundancy	AP5010 now supports Ethernet redundancy.

Table 1: New Features in 24.1.0.68 (continued)

Feature ID	Feature	Description
XIQ-14123	Flag conflict for interdependent configurations impacting ExtremeCloud IQ managed configurations	ExtremeCloud IQ now detects when device configuration is out of sync due to configuration changes made outside of ExtremeCloud IQ.
XIQ-14154	ExtremeCloud IQ Clients table populated by ExtremeControl	Client information updates by ExtremeCloud IQ Controller are supported through ExtremeCloud IQ Site Engine.
XIQ-15049	Support Network Policy and Device Level VLAN Monitoring	ExtremeCloud IQ supports the ability to view VLAN information for Switch Engine devices. Go to Manage > Devices > Monitoring > Interfaces > VLAN . The VLAN page displays: the VLAN Name, VLAN ID, Active Ports (Enabled port with VLAN assigned), STP Instance, IGMP Snooping, and DHCP Snooping information. Select a VLAN to highlight the assigned ports. Switch Engine version 32.6.2.68 is required.
XIQ-15762	Add Cloud Config Groups as an User-Profile Assignment Rule	Cloud Config Groups are supported when creating assignment rules for user profiles. This option provides flexibility in assigning user profile configuration to specific access points.
XIQ-16896	6E APs - 6G client mode support	With IQ Engine 10.6.6, Wi-Fi 6E APs support Client mode on all bands, now allowing the AP to connect to OWE- or SAE-protected networks on the 6 GHz band.
XIQ-16934	Support IGMP Snooping VLAN Attributes (Switch Engine)	ExtremeCloud IQ now supports the configuration of IGMP Snooping per VLAN for Switch Engine devices within VLAN attributes. IGMP Snooping definition within VLAN attributes takes precedence over IGMP Snooping configuration within a switch template.
XIQ-17093	Add MTU Setting to AP Device Configuration Page	Maximum Transmission Unit (MTU) is now a customizable option in the AP Device Configuration page.
XIQ-17094	Add MTU Setting to AP Template	Maximum Transmission Unit (MTU) is now a customizable option in the AP Template Advanced Settings .
XIQ-17485	Add RADIUS Failover Settings into GUI	RADIUS Server failover settings now include customizable failover timing controls. Two settings are available: Aggressive and Customizable .

Table 1: New Features in 24.1.0.68 (continued)

Feature ID	Feature	Description
XIQ-18579	Connect level - Apply license violation for Connect accounts above the threshold of 10 managed devices	Connect level accounts are limited to a maximum of 10 managed devices. Connect level accounts with more than 10 managed devices are in license violation and the user interface is locked. A Connect Level customer with more than 10 managed devices must do one of the following: <ul style="list-style-type: none"> • Convert devices above the 10-device threshold to Unmanaged • Upgrade to a Pilot level account
XIQ-18626	Connect level - Logs not available in Connect level	Connect Level accounts do not have access to KDDR Logs, Authentication Logs, or Accounting Logs. Upgrade to a paid account to use these features.
XIQ-18627	Connect level - Reports not available in Connect level	Connect Level accounts do not have access to reports. Upgrade to a paid account to use these features.
XIQ-18628	Connect Level - Limit ML Insights for Connect level	Connect Level accounts do not have access to Zone View, Time Lapse Options, or Device Trail Over Time. Upgrade to a paid account to use these features.
XIQ-18642	Connect Level - Disable Spectrum Intelligence for Connect	Connect Level accounts do not have access to Spectrum Intelligence . Upgrade to a paid account to use these features.
XIQ-18643	Connect level - Restrict - restrict Time range to 7 days maximum	Connect Level accounts are limited to a maximum of 7 days of statistics. Upgrade to a paid account to access details for a longer period.
XIQ-18644	Connect level - Restrict Change Device Mode	Connect Level accounts do not have access to Change Device Mode. Upgrade to a paid account to use this feature.
XIQ-19303	Consolidate IGMP config at device level for VOSS/Fabric Engine	ExtremeCloud IQ can detect when Fabric Engine devices have IGMP configurations that are out of sync with assigned network policy configurations when network policy and configuration updates are performed.

Table 1: New Features in 24.1.0.68 (continued)

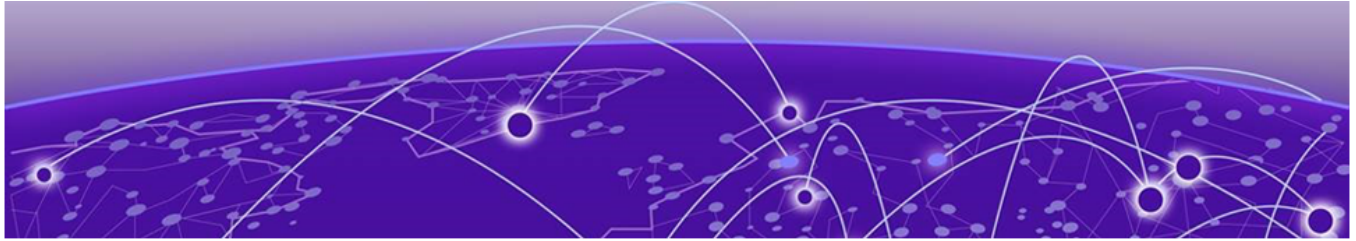
Feature ID	Feature	Description
XIQ-19353	Tunnel Concentrator: Configuration and Visibility Support for Tunnel Concentrator	This release introduces Tunnel Concentrator. Use ExtremeCloud IQ to onboard and preview the new Tunnel Concentrator on the Manage Device page, configure single or redundant device pairs, and create tunnel policies. The User Profiles Traffic Tunneling page includes a new Tunnel Concentrator option.
XIQ-19755	Distinguish between Unlicensed and Grace period	When there is an issue with an ExtremeCloud IQ CoPilot license, the banner displays with a link to the List of Affected Devices . The list of affected devices contains a Status column to distinguish if the ExtremeCloud IQ CoPilot Grace Period is applied or if it is already Unlicensed .
XIQ-20357	Ability to view storm control in Switch Engine Monitoring D360	ExtremeCloud IQ now displays current storm control values for Switch Engine devices. Go to Manage > Devices > Monitor Overview and select Storm Control in the Port column selector.
XIQ-20419	Allow BPDU restrict and recovery time in ExtremeXOS/Switch Engine Port Type	Enable BPDU restrict in an ExtremeXOS/Switch Engine family port type. When a BPDU restrict port receives a BPDU, the system disables the port, blocking the loop. Specify a recovery timeout, which allows the port to be enabled after the configured amount of time. Note: If a timeout is not specified, software version 32.6.2 or later must be installed.
XIQ-20465	Support LED Locate Utility for ExtremeXOS/Switch Engine	Switch Engine devices now support the ability to flash the LED. Go to Manage Device > Select a single device > Utilities > Tools > Locate Device .

Table 1: New Features in 24.1.0.68 (continued)

Feature ID	Feature	Description
XIQ-20616	ExtremeCloud IQ Topology Map LAG, VLAN, and Wired Client View (Switch Engine/x435)	ExtremeCloud IQ supports the ability to display VLAN information and LAG visibility in the topology map for Switch Engine devices. Select a Switch Engine device to display a list of configured VLANs. A bold green line indicates a port configured as a LAG. In the Port Info view, select the LAG link to view the port members of the LAG. The Port Info view also displays connected ports that are not members of the LAG.
XIQ-21083	AP5010 for South Africa Enable 6E Radio	The AP5010 supports the 6E radio as a configurable option for 6GHz in South Africa.
XIQ-21085	AP4000 for South Africa Enable 6E Radio	The AP4000 is now a configurable option for 6GHz in South Africa.
XIQ-21507	SES-Imagotag Routing	Defining a VLAN to isolate SES-Imagotag data traffic from the management VLAN is supported.
XIQ-21216	Support for IQ Engine 10.6.6	This release adds support for IQ Engine 10.6.6.
XIQ-22530	Ability to delete orphaned devices managed by ExtremeCloud IQ Site Engine	Deleting orphaned devices that are managed by ExtremeCloud IQ Site Engine is now supported.
XIQ-22587	Connect level - Wording adjustments for ExtremeCloud IQ Connect tier	Updated Connect tier messages when the limit is reached.
XIQ-23293	Support Toggle for LLDP Med Capabilities in ExtremeXOS/Switch Engine Port Type	ExtremeCloud IQ supports toggling LLDP MED Capabilities for Switch Engine devices in Port Type Transmission Settings for all port usage types. Previously, LLDP MED Capabilities were supported on Phone with a Data Port only. If a port type with port usage of Phone with a Data Port has other LLDP MED options enabled, the LLDP MED Capabilities in transmission settings are automatically enabled.
XIQ-24592	Add Unassigned Location to Filter	This enhancement adds the capability to locate devices that do not have a Site assigned .
XIQ-25804	ExtremeXOS/Switch Engine 31.7.2.28-patch1-64 Onboard, Monitor, Config (Drag/Drop) Support	ExtremeCloud IQ supports ExtremeXOS/Switch Engine 31.7.2.28-patch1-64 image via local image management option.

Table 1: New Features in 24.1.0.68 (continued)

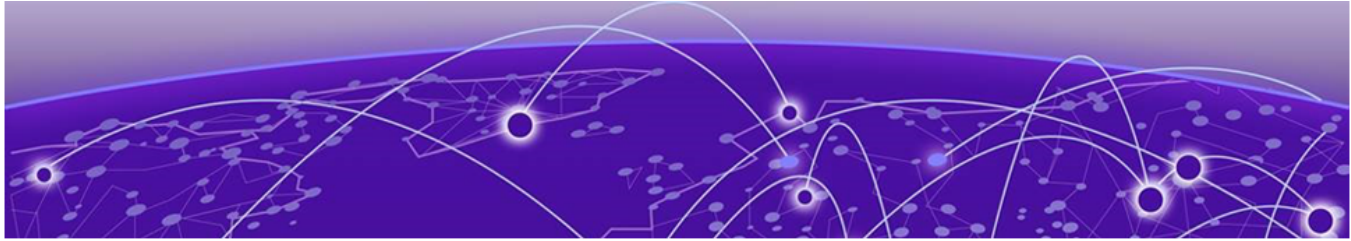
Feature ID	Feature	Description
XIQ-25805	ExtremeXOS/Switch Engine 31.7.2.28-patch1-64 Download Image Support	ExtremeCloud IQ supports ExtremeXOS/Switch Engine 31.7.2.28-patch1-64 image download.
XIQ-25806	ExtremeXOS/Switch Engine 32.6.2 Onboard, Monitor, Config (Drag/Drop) Support	ExtremeCloud IQ supports ExtremeXOS/Switch Engine 32.6.2 image through the local image management option.
XIQ-25808	ExtremeXOS/Switch Engine 32.6.2 Download Image Support	ExtremeCloud IQ supports ExtremeXOS/Switch Engine 32.6.2 image download.
XESS-1245	Autofill Passwords for SMS	<p>When using SMS passcodes, the mobile device can automatically enter the passcode from the SMS instead of forcing a manual entry. The mobile device prompts to enter the passcode. Like a 2-factor authentication process, you receive a mobile text with a code. An iOS or Android phone knows you received the text. When you are in the passcode field, the software keyboard has an option to autofill that field.</p> <p>This feature requires a new template and ExtremeCloud IQ version 24.1.0 or later.</p>



Addressed Issues in 24.1.0.68

Table 2: Addressed Issues in 24.1.0.68

Issue ID	
XIQ-28079	A device sending LLDP packets attached to a switch port with Instant Port enabled with a MAC and LLDP Device type match was only matching on the LLDP Device type, even when the LLDP Device type match order was below the MAC device type match. This issue is resolved in Switch Engine 32.6.2.
XIQ-24848	After onboarding a stack and assigning a template, the configuration delta might display the error message: "Cannot find device stack template." Perform a configuration update. Then, subsequent configuration changes to the stack display the configuration delta.



Known Issues in 24.1.0.68

The following table lists known product issues. Issues are grouped according to ID prefix and sorted within their group with the most recently logged issue listed first. (Issue IDs are in descending order.)

Table 3: Known Issues in 24.1.0.68

Issue ID	Description
XIQ-20111	It is impossible to modify elements of a site configuration if a country is not assigned to the site. Each site must have an assigned country.
XIQ-20764	The protocol-suite CLI is missing for Wired .1X security-object for APs other than 150W and 302W. Workaround: After initially enabling user authentication on the AP and later enabling MAC authentication, the APs hold the protocol suite information. To enable connection with user authentication, run the CLI on the AP manually or apply the following to a supplemental CLI: security-object <object-name> security protocol-suite 802.1x
XIQ-20909	AP3000: When trying to configure 6 GHz for a country that does not support it, the configuration push fails. Workaround: Revert to 2.4 GHz.
XIQ-25506 02859821, 02862601, 02868575	An upgrade to VOSS/Fabric Engine 9.0 no longer requires a 10G license for 5320 SKUs. An issue exists where the Manage > Devices table does not correctly display an existing 10G license in the License column. However, the 10G license can still be revoked with the Action > Revoke > License > 4-port 10G or 8-port 10G license option.
XIQ-22574	ExtremeCloud IQ accounts that are restricted to see devices in certain locations do not see devices that do not have a location set. Workaround: Prevent user roles with access to a subset of locations from having access to devices that are not placed in a location.
XIQ-22462	A configuration update might fail for configurations related to IPv6 on Switch Engine running software version 32.5.1.5. Workaround: Upgrade to 32.5.1.5 Patch1-1 and then proceed with pushing a device configuration update.

Table 3: Known Issues in 24.1.0.68 (continued)

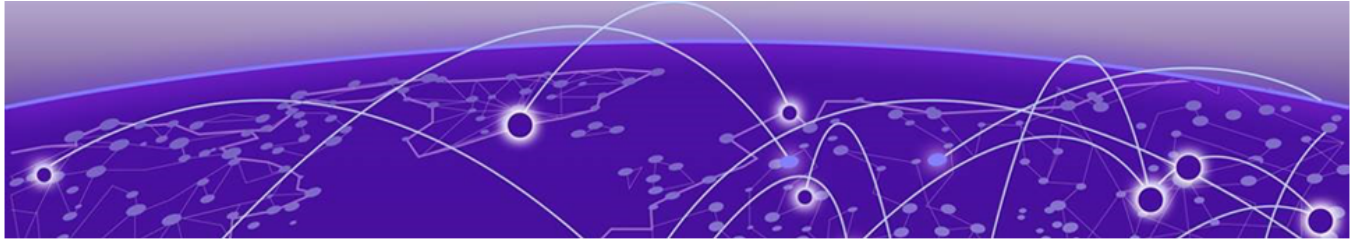
Issue ID	Description
XIQ-21943	When an account goes into License Violation state, the user interface might not be locked until the page is refreshed or the user logs out and logs in again. There is no notification to the user, and some actions do not work in the License Violation state.
XIQ-19572	Upon upgrade from ExtremeCloud IQ 23.2.x to 23.3.x, the Manage > Devices page does not retain settings from 23.2.x for the os option under the Column Picker drop-down list. To revert to the 23.2.x page view, the os option must be reselected, and the column repositioned on the page, as desired.
XIQ-18679	Onboarding of Switch Engine instances might result in incorrect license violations reported in ExtremeCloud IQ due to Navigator license consumption when ExtremeCloud IQ CoPilot licenses are available. Workaround: Set devices to Unmanaged and then Managed to remedy the situation.
XIQ-18544	When VGVA configurations fail due to using the same WPA3 SSID in a single network policy, move the APs associated with the WPA3 enabled SSID to a different profile.
XIQ-18175	The question mark character is supported in the Global Setting > Device Management Settings password text box, but it is not supported in the Policy > Device Credentials password text box. Note: Switch Engine and Fabric Engine do not support the question mark character. You can create a separate password for Switch Engine and Fabric Engine at device-level configuration.
XIQ-17024	The Cable Test action is not supported on the x435 switch running the 32.3 software image due to limitations with storage space on the switch.
XIQ-16652	The AP3000/X and AP5010U Auto Provision Update is failing with country code discover timeout.
XIQ-12503	Network 360 shows Unknown Error when All Access Points Applications is selected and the user is selecting both ExtremeWireless WiNG and IQ Engine devices. Workaround: Deselect ExtremeWireless WiNG devices.
XIQ-11984	For AP3000/X and AP5050U/D devices operating in dual mode, under Manage > Devices > Interface Settings > Modify Multiple : Interface Settings > Wireless Interfaces , the radio Operating Mode drop-down list includes a 5 GHz option which can be selected; however, this option is not supported with this configuration.
XIQ-9848	Duplicate entries in the Client Trail when a client moves away from the AP then comes back.

Table 3: Known Issues in 24.1.0.68 (continued)

Issue ID	Description
XIQ-9847	The Roam Time entry in the Client Trail does not always display the correct device name.
XIQ-7312	5720 Switch Engine devices show as connected during the reboot process.
XIQ-5700	Client Trial only showed the currently connected AP when the client roamed to a different AP from the onboarded ExtremeCloud IQ Controller.
CFD-8946 (02710778, 02748750)	License descriptions are automatically cleared when the "ACTIVATED" status is updated.
CFD-8678 (02688797)	VLAN probe category counts are not always accurate.
CFD-8677 (02688860)	VLAN probe shows the results of a successful probe while the status says it is still running.
CFD-8598 (02670900)	Cannot enable Guest Essentials via Configure > Guest Essentials Users . Workaround: From ExtremeCloud IQ, go to Essentials > Extreme Guest .
CFD-8216 (02634924)	When Air Defense Essentials is enabled, APs running IQ Engine 10.4.3 or earlier versions cannot receive a delta configuration push from ExtremeCloud IQ. Upgrade the access points to the latest IQ Engine supported version.
APC-41057	Legend labels on the switch stack graph sometimes disappear when attempting to download or print the graph. Workaround: <ol style="list-style-type: none"> 1. Only download one graph at a time, and open the downloaded file before choosing to download again. 2. The SVG option is the most stable format; PNG, JPG, and PDF have spacing issues on the legend section.
APC-22297	ExtremeCloud IQ displays PoE configuration controls for all ports on the Dell EMC N1108P switch, even though the N1100P only supports PoE on ports 1 - 4.
APC-21456	In rare cases, ExtremeCloud IQ does not upload some IGMP sub-commands successfully. Workaround: Use the Supplemental CLI to upload commands when necessary.
APC-20760	ExtremeCloud IQ reports any wired devices that are connected to an SR2208P switch as unidentified.
APC-20734	When a configuration upload is unsuccessful because of improper Supplemental CLI commands, hovering the mouse over the upload message does not result in a tool tip containing the problematic CLI command.
APC-20647	ExtremeCloud IQ does not successfully upload configurations that contain an external RADIUS server.

Table 3: Known Issues in 24.1.0.68 (continued)

Issue ID	Description
APC-20172	ExtremeCloud IQ wrongly displays the option to configure SSH when attempting bulk edits of multiple switches or of switches and APs together. However, when the administrator is performing bulk edits of multiple APs only, ExtremeCloud IQ correctly hides the SSH configuration options.
DAPC-385	ExtremeCloud IQ sometimes displays the incorrect port number in the tool tip when the administrator mouses over a stack port on the Port Status page.
DAPC-382	When an administrator attaches a switch stack to HiveManager Virtual Appliance , only the primary switch is auto-detected. The administrator must subsequently onboard the remaining stack members manually.
DAPC-240D	<p>After the primary switch is removed from a stack, the stack retains the old MAC address. As a result, the primary switch (now a standalone switch), and the original stack both have the same MAC address, which ExtremeCloud IQ cannot resolve.</p> <p>Workaround: Before removing the primary switch from a stack with the intention of continuing to use the primary as a standalone switch, perform the following steps:</p> <ol style="list-style-type: none"> 1. Remove the stack from ExtremeCloud IQ. 2. Perform the related command line operations on the stack to remove the primary switch. 3. Add the stack and the standalone switch to ExtremeCloud IQ again.
DAPC-222	After an administrator uploads a stack template to a switch stack, ExtremeCloud IQ displays [-No Change-] in the Stack Template drop-down list, rather than the new template name.
DAPC-186	ExtremeCloud IQ does not display the management VLAN information in the Devices table.
DAPC-73	When resetting multiple switches simultaneously to factory default settings, ExtremeCloud IQ erroneously reports that the reset was unsuccessful.



Device Support Information

- [Controllers](#) on page 18
- [Access Points](#) on page 19
- [Switches](#) on page 22
- [Routers](#) on page 34
- [ExtremeCloud IQ Site Engine](#) on page 35
- [ExtremeCloud IQ CoPilot](#) on page 38
- [ExtremeCloud A3](#) on page 39
- [Supported Browsers and Display Settings](#) on page 39

This section lists the devices that ExtremeCloud IQ supports and includes the latest version of the software that each device supports.

Controllers

Device Model	Latest Supported Release	Comments
E1120	XIQC 10.08.01	Monitor only
E2120	XIQC 10.08.01	Monitor only
E2122	XIQC 10.08.01	Monitor Only
E3120	XIQC 10.08.01	Monitor only
VE6120	XIQC 10.08.01	Monitor only
VE6120H	XIQC 10.05.02	Monitor only
VE6120K	XIQC 10.08.01	Monitor Only
VE6125	XIQC 10.08.01	Monitor only
VE6125K	XIQC 10.08.01	Monitor Only
NX5500	WiNG OS 7.9.3.0	Monitor only
NX7500 Series	WiNG OS 7.9.3.0	Monitor only
NX9500 Series	WiNG OS 7.7.1.5	Monitor only
NX9600 Series	WiNG OS 7.9.3.0	Monitor only
RFS4000 Series	WiNG OS 5.9.7.1	Monitor only
RFS6000 Series	WiNG OS 5.9.1.8	Monitor only
RFS7000 Series	WiNG OS 5.8.6.11	Monitor only
VX9000	WiNG OS 7.9.3.0	Monitor only

Access Points

Access Point information is provided in the following sections:

- [Universal Hardware](#) on page 19
- [IQ Engine \(Cloud Native\)](#) on page 20
- [ExtremeWireless WiNG](#) on page 21
- [Extreme Wireless](#) on page 22

Universal Hardware

Device Model	Latest Supported Release	Comments
AP302W	IQ Engine 10.6.6 WiNG OS 7.9.3.0 AP 10.8.1	Platform support introduced with IQ Engine 10.3.1
AP305C	IQ Engine 10.6.6 WiNG OS 7.9.3.0 AP 10.8.1	Platform support introduced with IQ Engine 10.1.1
AP305C-1	IQ Engine 10.6.6 WiNG OS 7.9.3.0 AP 10.8.1	Platform support introduced with IQ Engine 10.4.6
AP305CX	IQ Engine 10.6.6 WiNG OS 7.9.3.0 AP 10.8.1	Platform support introduced with IQ Engine 10.1.1
AP3000	IQ Engine 10.6.6 AP 10.8.1	Platform support introduced with IQ engine 10.6.1
AP3000X	IQ Engine 10.6.6	Platform support introduced with IQ Engine 10.6.1
AP4000	IQ Engine 10.6.6 AP 10.8.1	Platform support introduced with IQ Engine 10.4.1
AP4000-1	IQ Engine 10.6.6 AP 10.8.1	Platform support introduced with IQ Engine 10.4.2
AP410C	IQ Engine 10.6.6 WiNG OS 7.9.3.0 AP 10.8.1	Platform support introduced with IQ Engine 10.1.2
AP410C-1	IQ Engine 10.6.6 WiNG OS 7.9.3.0 AP 10.8.1	Platform support introduced with IQ Engine 10.4.6
AP460C	IQ Engine 10.6.6 WiNG OS 7.9.3.0 AP 10.8.1	Platform support introduced with IQ Engine 10.1.2

Device Model	Latest Supported Release	Comments
AP460S6C	IQ Engine 10.6.6 WiNG OS 7.9.3.0 AP 10.8.1	Platform support introduced with IQ Engine 10.1.2
AP460S12C	IQ Engine 10.6.6 WiNG OS 7.9.3.0 AP 10.8.1	Platform support introduced with IQ Engine 10.1.2
AP5010	IQ Engine 10.6.6 AP 10.8.1 WiNG OS 7.9.3.0	Platform support introduced with IQ Engine 10.5.1
AP5050U	IQ Engine 10.6.6 AP 10.8.1	Platform support introduced with IQ Engine 10.5.3
AP5050D	IQ Engine 10.6.6 AP 10.8.1	Platform support introduced with IQ Engine 10.5.3
AP510C/CX	IQ Engine 10.6.6	Platform support introduced with IQ Engine 10.0.8

IQ Engine (Cloud Native)

Device Model	Latest Supported Release	Comments
AP630	IQ Engine 10.6.2	Platform support introduced with IQ Engine 10.0.1. End of Life Information
AP650	IQ Engine 10.6.6	Platform support introduced with IQ Engine 10.0.1. End of Life Information
AP650X	IQ Engine 10.6.6	Platform support introduced with IQ Engine 10.0.1. End of Life Information
AP1130	IQ Engine 10.6.1a	Platform support introduced with IQ Engine 8.2.1. End of Life Information
AP550	IQ Engine 10.6.1a	Platform support introduced with IQ Engine 7.0.3. End of Life Information
AP390	IQ Engine 6.5.16	End of Life Information
AP370	IQ Engine 6.5.16	End of Life Information
AP350	IQ Engine 6.5.16	End of Life Information
AP340	IQ Engine 6.5.10	End of Life Information
AP330	IQ Engine 6.5.16	End of Life Information
AP320	IQ Engine 6.5.10	End of Life Information
AP250	IQ Engine 10.6.1a	Platform support introduced with IQ Engine 7.0.2.

Device Model	Latest Supported Release	Comments
AP245X	IQ Engine 10.6.1a	Platform support introduced with IQ Engine 7.0.2. End of Life Information
AP230	IQ Engine 10.6.1a	Platform support introduced with IQ Engine 8.2.1. End of Life Information
AP170	IQ Engine 6.5.16	End of Life Information
AP150W	IQ Engine 10.6.1a	Platform support introduced with IQ Engine 8.1.1.
AP141	IQ Engine 6.5.16	End of Life Information
AP130	IQ Engine 10.6.1a	Platform support introduced with IQ Engine 8.2.1. End of Life Information
AP122	IQ Engine 10.6.1a	Platform support introduced with IQ Engine 7.0.4.
AP122X	IQ Engine 10.6.1a	Platform support introduced with IQ Engine 8.2.1. End of Life Information
AP121	IQ Engine 6.5.16	End of Life Information
AP120	IQ Engine 6.5.10	End of Life Information
Atom AP30	IQ Engine 10.6.1a	Platform support introduced with IQ Engine 8.3.2.

ExtremeWireless WiNG

Device Model	Latest Supported Release	Comments
AP560i	WiNG OS 7.9.3.0	Monitor only
AP560h	WiNG OS 7.9.3.0	Monitor only
AP505	WiNG OS 7.9.3.0	Monitor only
AP510i	WiNG OS 7.9.3.0	Monitor only
AP510i-1	WiNG OS 7.9.3.0	Monitor only
AP460i/e	WiNG OS 7.9.3.0	Monitor only
AP410i/e	WiNG OS 7.9.3.0	Monitor only
AP410i-1	WiNG OS 7.9.3.0	Monitor only
AP360i/e	WiNG OS 7.9.3.0	Monitor only
AP310i/e	WiNG OS 7.9.3.0	Monitor only
AP310i/e-1	WiNG OS 7.9.3.0	Monitor Only
AP3000	WiNG OS 7.9.3.0	Monitor Only
AP8533	WiNG OS 7.7.1.8	Monitor only
AP8432	WiNG OS 7.7.1.8	Monitor only
AP8232	WiNG OS 5.9.1.8	Monitor only
AP8222	WiNG OS 5.8.6.11	Monitor only
AP8163	WiNG OS 5.9.7.1	Monitor only

Device Model	Latest Supported Release	Comments
AP8132	WiNG OS 5.9.1.8	Monitor only
AP8122	WiNG OS 5.9.1.8	Monitor only
AP7662	WiNG OS 7.7.1.8	Monitor only
AP7632	WiNG OS 7.7.1.8	Monitor only
AP7622	WiNG OS 5.9.7.1	Monitor only
AP7612	WiNG OS 7.7.1.8	Monitor only
AP7602	WiNG OS 5.9.7.1	Monitor only
AP7562	WiNG OS 7.7.1.8	Monitor only
AP7532	WiNG OS 7.7.1.8	Monitor only
AP7522	WiNG OS 7.7.1.8	Monitor only
AP7502	WiNG OS 5.9.7.1	Monitor only
AP7161	WiNG OS 5.9.1.8	Monitor only
AP7131	WiNG OS 5.8.6.11	Monitor only
AP6562	WiNG OS 5.9.1.8	Monitor only
AP6532	WiNG OS 5.9.1.8	Monitor only
AP6522	WiNG OS 5.9.1.8	Monitor only
AP6521	WiNG OS 5.9.1.8	Monitor only
AP6511	WiNG OS 5.8.6.11	Monitor only

Extreme Wireless

Device Model	Latest Supported Release	Comments
AP3965	ExtremeWireless 10.51	Monitor only
AP3935	ExtremeWireless 10.51	Monitor only
AP3917	ExtremeWireless 10.51	Monitor only
AP3916C	ExtremeWireless 10.51	Monitor only
AP3915	ExtremeWireless 10.51	Monitor only
AP3912	ExtremeWireless 10.51	Monitor only
SA201	ExtremeWireless 10.51	Monitor only

Switches

Switch information is provided in the following sections:

- [Universal Hardware](#) on page 23
- [ExtremeXOS](#) on page 29
- [VOSS](#) on page 32

- [IQ Engine \(Cloud Native\)](#) on page 33
- [Dell EMC](#) on page 34

For the latest release notes for Fabric Engine and Switch Engine , see the [Extreme Networks Documentation Site](#).

Universal Hardware

Device Model	Latest Supported Release	Standalone Support	Stack Support
5320-16P-4XE	Switch Engine 32.7 Fabric Engine 9.0	<ul style="list-style-type: none"> • Monitor • Template- and device-level configuration • SSH Proxy* • Supplemental CLI* 	Switch Engine: <ul style="list-style-type: none"> • Monitor • Template- and device-level configuration • SSH Proxy
5320-16P-4XE-DC	Switch Engine 32.7 Fabric Engine 9.0	<ul style="list-style-type: none"> • Monitor • Template- and device-level configuration • SSH Proxy* • Supplemental CLI* 	Switch Engine: <ul style="list-style-type: none"> • Monitor • Template- and device-level configuration • SSH Proxy
5320-24T-8XE	Switch Engine 32.7 Fabric Engine 9.0	<ul style="list-style-type: none"> • Monitor • Template- and device-level configuration • SSH Proxy* • Supplemental CLI* 	<ul style="list-style-type: none"> • Monitor • Template- and device-level configuration • SSH Proxy
5320-24PT-8XE	Switch Engine 32.7 Fabric Engine 9.0	<ul style="list-style-type: none"> • Monitor • Template- and device-level configuration • SSH Proxy* • Supplemental CLI* 	<ul style="list-style-type: none"> • Monitor • Template- and device-level configuration • SSH Proxy
5320-48P-8XE	Switch Engine 32.7 Fabric Engine 9.0	<ul style="list-style-type: none"> • Monitor • Template- and device-level configuration • SSH Proxy* • Supplemental CLI* 	<ul style="list-style-type: none"> • Monitor • Template- and device-level configuration • SSH Proxy
5320-48T-8XE	Switch Engine 32.7 Fabric Engine 9.0	<ul style="list-style-type: none"> • Monitor • Template- and device-level configuration • SSH Proxy* • Supplemental CLI* 	<ul style="list-style-type: none"> • Monitor • Template- and device-level configuration • SSH Proxy

Device Model	Latest Supported Release	Standalone Support	Stack Support
5420F-24T-4XE	Switch Engine 32.7 Fabric Engine 9.0	<ul style="list-style-type: none"> • Monitor • Template- and device-level configuration • SSH Proxy* • Supplemental CLI* 	<ul style="list-style-type: none"> • Monitor • Template- and device-level configuration • SSH Proxy
5420F-24P-4XE	Switch Engine 32.7 Fabric Engine 9.0	<ul style="list-style-type: none"> • Monitor • Template- and device-level configuration • SSH Proxy* • Supplemental CLI* 	<ul style="list-style-type: none"> • Monitor • Template- and device-level configuration • SSH Proxy
5420F-24S-4XE	Switch Engine 32.7 Fabric Engine 9.0	<ul style="list-style-type: none"> • Monitor • Template- and device-level configuration • SSH Proxy* • Supplemental CLI* 	<ul style="list-style-type: none"> • Monitor • Template- and device-level configuration • SSH Proxy
5420F-48T-4XE	Switch Engine 32.7 Fabric Engine 9.0	<ul style="list-style-type: none"> • Monitor • Template- and device-level configuration • SSH Proxy* • Supplemental CLI* 	<ul style="list-style-type: none"> • Monitor • Template- and device-level configuration • SSH Proxy
5420F-48P-4XE	Switch Engine 32.7 Fabric Engine 9.0	<ul style="list-style-type: none"> • Monitor • Template- and device-level configuration • SSH Proxy* • Supplemental CLI* 	<ul style="list-style-type: none"> • Monitor • Template- and device-level configuration • SSH Proxy
5420F-48P-4XL	Switch Engine 32.7 Fabric Engine 9.0	<ul style="list-style-type: none"> • Monitor • Template- and device-level configuration • SSH Proxy* • Supplemental CLI* 	<ul style="list-style-type: none"> • Monitor • Template- and device-level configuration • SSH Proxy
5420F-8W-16P-4XE	Switch Engine 32.7 Fabric Engine 9.0	<ul style="list-style-type: none"> • Monitor • Template- and device-level configuration • SSH Proxy* • Supplemental CLI* 	<ul style="list-style-type: none"> • Monitor • Template- and device-level configuration • SSH Proxy

Device Model	Latest Supported Release	Standalone Support	Stack Support
5420F-16W-32P-4XE	Switch Engine 32.7 Fabric Engine 9.0	<ul style="list-style-type: none"> • Monitor • Template- and device-level configuration • SSH Proxy* • Supplemental CLI* 	<ul style="list-style-type: none"> • Monitor • Template- and device-level configuration • SSH Proxy
5420F-16MW-32P-4XE	Switch Engine 32.7 Fabric Engine 9.0	<ul style="list-style-type: none"> • Monitor • Template- and device-level configuration • SSH Proxy* • Supplemental CLI* 	<ul style="list-style-type: none"> • Monitor • Template- and device-level configuration • SSH Proxy
5420M-24T-4YE	Switch Engine 32.7 Fabric Engine 9.0	<ul style="list-style-type: none"> • Monitor • Template- and device-level configuration • SSH Proxy* • Supplemental CLI* 	<ul style="list-style-type: none"> • Monitor • Template- and device-level configuration • SSH Proxy
5420M-24W-4YE	Switch Engine 32.7 Fabric Engine 9.0	<ul style="list-style-type: none"> • Monitor • Template- and device-level configuration • SSH Proxy* • Supplemental CLI* 	<ul style="list-style-type: none"> • Monitor • Template- and device-level configuration • SSH Proxy
5420M-48T-4YE	Switch Engine 32.7 Fabric Engine 9.0	<ul style="list-style-type: none"> • Monitor • Template- and device-level configuration • SSH Proxy* • Supplemental CLI* 	<ul style="list-style-type: none"> • Monitor • Template- and device-level configuration • SSH Proxy
5420M-48W-4YE	Switch Engine 32.7 Fabric Engine 9.0	<ul style="list-style-type: none"> • Monitor • Template- and device-level configuration • SSH Proxy* • Supplemental CLI* 	<ul style="list-style-type: none"> • Monitor • Template- and device-level configuration • SSH Proxy
5420M-16MW-32P-4YE	Switch Engine 32.7 Fabric Engine 9.0	<ul style="list-style-type: none"> • Monitor • Template- and device-level configuration • SSH Proxy* • Supplemental CLI* 	<ul style="list-style-type: none"> • Monitor • Template- and device-level configuration • SSH Proxy

Device Model	Latest Supported Release	Standalone Support	Stack Support
5520-24W	Switch Engine 32.7 Fabric Engine 9.0	<ul style="list-style-type: none"> • Monitor • Template- and device-level configuration • SSH Proxy* • Supplemental CLI* 	<ul style="list-style-type: none"> • Monitor • Template- and device-level configuration • SSH Proxy
5520-24T	Switch Engine 32.7 Fabric Engine 9.0	<ul style="list-style-type: none"> • Monitor • Template- and device-level configuration • SSH Proxy* • Supplemental CLI* 	<ul style="list-style-type: none"> • Monitor • Template- and device-level configuration • SSH Proxy
5520-24T-ACDC	Switch Engine 32.7 Fabric Engine 9.0	<ul style="list-style-type: none"> • Monitor • Template- and device-level configuration • SSH Proxy* • Supplemental CLI* 	Switch Engine: <ul style="list-style-type: none"> • Monitor • Template- and device-level configuration • SSH Proxy
5520-24X-ACDC	Switch Engine 32.7 Fabric Engine 9.0	<ul style="list-style-type: none"> • Monitor • Template- and device-level configuration • SSH Proxy* • Supplemental CLI* 	Switch Engine: <ul style="list-style-type: none"> • Monitor • Template- and device-level configuration • SSH Proxy
5520-48W	Switch Engine 32.7 Fabric Engine 9.0	<ul style="list-style-type: none"> • Monitor • Template- and device-level configuration • SSH Proxy* • Supplemental CLI* 	<ul style="list-style-type: none"> • Monitor • Template- and device-level configuration • SSH Proxy
5520-48T	Switch Engine 32.7 Fabric Engine 9.0	<ul style="list-style-type: none"> • Monitor • Template- and device-level configuration • SSH Proxy* • Supplemental CLI* 	<ul style="list-style-type: none"> • Monitor • Template- and device-level configuration • SSH Proxy
5520-48T-ACDC	Switch Engine 32.7 Fabric Engine 9.0	<ul style="list-style-type: none"> • Monitor • Template- and device-level configuration • SSH Proxy* • Supplemental CLI* 	<ul style="list-style-type: none"> • Monitor • Template- and device-level configuration • SSH Proxy

Device Model	Latest Supported Release	Standalone Support	Stack Support
5520-12MW-36W	Switch Engine 32.7 Fabric Engine 9.0	<ul style="list-style-type: none"> • Monitor • Template- and device-level configuration • SSH Proxy* • Supplemental CLI* 	<ul style="list-style-type: none"> • Monitor • Template- and device-level configuration • SSH Proxy
5520-48SE	Switch Engine 32.7 Fabric Engine 9.0	<ul style="list-style-type: none"> • Monitor • Template- and device-level configuration • SSH Proxy* • Supplemental CLI* 	<ul style="list-style-type: none"> • Monitor • Template- and device-level configuration • SSH Proxy
5520-48SE-ACDC	Switch Engine 32.7 Fabric Engine 9.0	<ul style="list-style-type: none"> • Monitor • Template- and device-level configuration • SSH Proxy* • Supplemental CLI* 	<ul style="list-style-type: none"> • Monitor • Template- and device-level configuration • SSH Proxy
5520-24X	Switch Engine 32.7 Fabric Engine 9.0	<ul style="list-style-type: none"> • Monitor • Template- and device-level configuration • SSH Proxy* • Supplemental CLI* 	Switch Engine: <ul style="list-style-type: none"> • Monitor • Template- and device-level configuration • SSH Proxy
5720-24MW	Switch Engine 32.7 Fabric Engine 9.0	<ul style="list-style-type: none"> • Monitor • Template- and device-level configuration • SSH Proxy* • Supplemental CLI* 	Switch Engine: <ul style="list-style-type: none"> • Monitor • Template- and device-level configuration • SSH Proxy
5720-48MW	Switch Engine 32.7 Fabric Engine 9.0	<ul style="list-style-type: none"> • Monitor • Template- and device-level configuration • SSH Proxy* • Supplemental CLI* 	Switch Engine: <ul style="list-style-type: none"> • Monitor • Template- and device-level configuration • SSH Proxy
5720-24MXW	Switch Engine 32.7 Fabric Engine 9.0	<ul style="list-style-type: none"> • Monitor • Template- and device-level configuration • SSH Proxy* • Supplemental CLI* 	Switch Engine: <ul style="list-style-type: none"> • Monitor • Template- and device-level configuration • SSH Proxy

Device Model	Latest Supported Release	Standalone Support	Stack Support
5720-48MXW	Switch Engine 32.7 Fabric Engine 9.0	<ul style="list-style-type: none"> Monitor Template- and device-level configuration SSH Proxy* Supplemental CLI* 	Switch Engine: <ul style="list-style-type: none"> Monitor Template- and device-level configuration SSH Proxy
7520-48Y	Switch Engine 32.7 Fabric Engine 9.0	Switch Engine: <ul style="list-style-type: none"> Monitor Template- and device-level configuration SSH Proxy* Supplemental CLI* Fabric Engine: Monitor	Switch Engine: <ul style="list-style-type: none"> Monitor Template- and device-level configuration SSH Proxy
7520-48YE	Switch Engine 32.7 Fabric Engine 9.0	Switch Engine: <ul style="list-style-type: none"> Monitor Template- and device-level configuration SSH Proxy* Supplemental CLI* Fabric Engine: Monitor	Switch Engine: <ul style="list-style-type: none"> Monitor Template- and device-level configuration SSH Proxy
7520-48XT	Switch Engine 32.7 Fabric Engine 9.0	Switch Engine: <ul style="list-style-type: none"> Monitor Template- and device-level configuration SSH Proxy* Supplemental CLI* Fabric Engine: Monitor	Switch Engine: <ul style="list-style-type: none"> Monitor Template- and device-level configuration SSH Proxy
7720-32c	Switch Engine 32.7 Fabric Engine 9.0	Switch Engine: <ul style="list-style-type: none"> Monitor Template- and device-level configuration SSH Proxy* Supplemental CLI* Fabric Engine: Monitor	Switch Engine: <ul style="list-style-type: none"> Monitor Template- and device-level configuration SSH Proxy



Note

* SSH Proxy and Supplemental CLI can be used for configuring additional parameters not currently available within template or device-level configurations.

ExtremeXOS

Device Model	Latest Supported Release	Standalone Support	Stack Support
X435-8P-2T-W	ExtremeXOS 32.5	<ul style="list-style-type: none"> • Monitor • Template- and device-level configuration • SSH Proxy* • Supplemental CLI* 	N/A
X435-24T-4S	ExtremeXOS 32.5	<ul style="list-style-type: none"> • Monitor • Template- and device-level configuration • SSH Proxy* • Supplemental CLI* 	N/A
X435-24P-4S	ExtremeXOS 32.5	<ul style="list-style-type: none"> • Monitor • Template- and device-level configuration • SSH Proxy* • Supplemental CLI* 	N/A
X435-8T-4S	ExtremeXOS 32.5	<ul style="list-style-type: none"> • Monitor • Template- and device-level configuration • SSH Proxy* • Supplemental CLI* 	N/A
X435-8P-4S	ExtremeXOS 32.5	<ul style="list-style-type: none"> • Monitor • Template- and device-level configuration • SSH Proxy* • Supplemental CLI* 	N/A
X440-G2-12p-10GE4	ExtremeXOS 32.5	<ul style="list-style-type: none"> • Monitor • Template- and device-level configuration • SSH Proxy* • Supplemental CLI* 	<ul style="list-style-type: none"> • Monitor • Template- and device-level configuration • SSH Proxy* • Supplemental CLI*
X440-G2-12t-10GE4	ExtremeXOS 32.5	<ul style="list-style-type: none"> • Monitor • Template- and device-level configuration • SSH Proxy* • Supplemental CLI* 	<ul style="list-style-type: none"> • Monitor • Template- and device-level configuration • SSH Proxy* • Supplemental CLI*

Device Model	Latest Supported Release	Standalone Support	Stack Support
X440-G2-24p-10GE4	ExtremeXOS 32.5	<ul style="list-style-type: none"> • Monitor • Template- and device-level configuration • SSH Proxy* • Supplemental CLI* 	<ul style="list-style-type: none"> • Monitor • Template- and device-level configuration • SSH Proxy* • Supplemental CLI*
X440-G2-24t-10GE4	ExtremeXOS 32.5	<ul style="list-style-type: none"> • Monitor • Template- and device-level configuration • SSH Proxy* • Supplemental CLI* 	<ul style="list-style-type: none"> • Monitor • Template- and device-level configuration • SSH Proxy* • Supplemental CLI*
X440-G2-48p-10GE4	ExtremeXOS 32.5	<ul style="list-style-type: none"> • Monitor • Template- and device-level configuration • SSH Proxy* • Supplemental CLI* 	<ul style="list-style-type: none"> • Monitor • Template- and device-level configuration • SSH Proxy* • Supplemental CLI*
X440-G2-48t-10GE4	ExtremeXOS 32.5	<ul style="list-style-type: none"> • Monitor • Template- and device-level configuration • SSH Proxy* • Supplemental CLI* 	<ul style="list-style-type: none"> • Monitor • Template- and device-level configuration • SSH Proxy* • Supplemental CLI*
X450-G2-24p-GE4	ExtremeXOS 32.5	<ul style="list-style-type: none"> • Monitor • Template- and device-level configuration • SSH Proxy* • Supplemental CLI* 	Monitor
X450-G2-24p-10GE4	ExtremeXOS 32.5	<ul style="list-style-type: none"> • Monitor • Template- and device-level configuration • SSH Proxy* • Supplemental CLI* 	Monitor
X450-G2-48p-10GE4	ExtremeXOS 32.5	<ul style="list-style-type: none"> • Monitor • Template- and device-level configuration • SSH Proxy* • Supplemental CLI* 	Monitor

Device Model	Latest Supported Release	Standalone Support	Stack Support
X460-G2-24p-10GE4	ExtremeXOS 32.5	<ul style="list-style-type: none"> • Monitor • Template- and device-level configuration • SSH Proxy* • Supplemental CLI* 	Monitor
X460-G2-48p-10GE4	ExtremeXOS 32.5	<ul style="list-style-type: none"> • Monitor • Template- and device-level configuration • SSH Proxy* • Supplemental CLI* 	Monitor
X465-24W	ExtremeXOS 32.5	<ul style="list-style-type: none"> • Monitor • Template- and device-level configuration • SSH Proxy* • Supplemental CLI* 	Monitor
X465-48W	ExtremeXOS 32.5	<ul style="list-style-type: none"> • Monitor • Template- and device-level configuration • SSH Proxy* • Supplemental CLI* 	Monitor
X465-24MU	ExtremeXOS 32.5	<ul style="list-style-type: none"> • Monitor • Template- and device-level configuration • SSH Proxy* • Supplemental CLI* 	Monitor
X465-48P	ExtremeXOS 32.5	<ul style="list-style-type: none"> • Monitor • Template- and device-level configuration • SSH Proxy* • Supplemental CLI* 	Monitor
X465-24MU-24W	ExtremeXOS 32.5	<ul style="list-style-type: none"> • Monitor • Template- and device-level configuration • SSH Proxy* • Supplemental CLI* 	Monitor

**Note**

* SSH Proxy and Supplemental CLI can be used for configuring additional parameters not currently available within template or device-level configurations.

VOSS

Device Model	Latest Supported Release	Standalone Support	Stack Support
VSP7432CQ	VOSS 9.0	<ul style="list-style-type: none"> • Monitor • Template- and device-level configuration • SSH Proxy* • Supplemental CLI* 	Not supported
VSP7400-48Y	VOSS 9.0	<ul style="list-style-type: none"> • Monitor • Template- and device-level configuration • SSH Proxy* • Supplemental CLI* 	Not supported
VSP4900-48P	VOSS 9.0	<ul style="list-style-type: none"> • Monitor • Template- and device-level configuration • SSH Proxy* • Supplemental CLI* 	Not supported
VSP4900-24XE	VOSS 9.0	<ul style="list-style-type: none"> • Monitor • Template- and device-level configuration • SSH Proxy* • Supplemental CLI* 	Not supported
VSP4900-24S	VOSS 9.0	<ul style="list-style-type: none"> • Monitor • Template- and device-level configuration • SSH Proxy* • Supplemental CLI* 	Not supported
VSP4900-12MXU-12XE	VOSS 9.0	<ul style="list-style-type: none"> • Monitor • Template- and device-level configuration • SSH Proxy* • Supplemental CLI* 	Not supported

Device Model	Latest Supported Release	Standalone Support	Stack Support
XA1480	VOSS 8.10	<ul style="list-style-type: none"> • Monitor • Template- and device-level configuration • SSH Proxy* • Supplemental CLI* 	Not supported
XA1440	VOSS 8.10	<ul style="list-style-type: none"> • Monitor • Template- and device-level configuration • SSH Proxy* • Supplemental CLI* 	Not supported

**Note**

* SSH Proxy and Supplemental CLI can be used for configuring additional parameters not currently available within template or device-level configurations.

IQ Engine (Cloud Native)

Device Model	Latest Supported Release
SR2024 End of Life	IQ Engine 6.5.12
SR2024P End of Life	IQ Engine 6.5.12
SR2124P End of Life	IQ Engine 6.5.12
SR2148P End of Life	IQ Engine 6.5.12
SR2208P	FASTPATH 8.2.0.2 v1.0.1.29 ExtremeCloud IQ Agent 1.1.31
SR2224P	FASTPATH 8.2.0.2 v1.0.1.29 ExtremeCloud IQ Agent 1.1.31
SR2324P	FASTPATH 8.2.0.2 v1.0.1.29 ExtremeCloud IQ Agent 1.1.31
SR2348P	FASTPATH 8.2.0.2 v1.0.1.29 ExtremeCloud IQ Agent 1.1.31

Dell EMC

Device Model	Latest Supported Release
N3132PX	IQAgent 1.1.29
N3024EF	IQAgent 1.1.29
N3024EP	IQAgent 1.1.29
N3024ET	IQAgent 1.1.29
N3048EP	IQAgent 1.1.29
N3048ET	IQAgent 1.1.29
N3024	IQAgent 1.1.29
N3024F	IQAgent 1.1.29
N3024P	IQAgent 1.1.29
N3048	IQAgent 1.1.29
N3048P	IQAgent 1.1.29
N2128PX	IQAgent 1.1.29
N2024	IQAgent 1.1.29
N2024P	IQAgent 1.1.29
N2048	IQAgent 1.1.29
N2048P	IQAgent 1.1.29
N1524	IQAgent 1.1.29
N1524P	IQAgent 1.1.29
N1548	IQAgent 1.1.29
N1548P	IQAgent 1.1.29
N1108T-ON	IQAgent 1.1.29
N1108P-ON	IQAgent 1.1.29
N1124T-ON	IQAgent 1.1.29
N1124P-ON	IQAgent 1.1.29
N1148T-ON	IQAgent 1.1.29
N1148P-ON	IQAgent 1.1.29

Routers

Device Model	Latest Supported Release	Standalone Support
BR100 End of Life	IQ Engine 6.5.12	<i>Not supported in ExtremeCloud IQ</i>
BR200 End of Life	IQ Engine 6.5.12	<i>Not supported in ExtremeCloud IQ</i>

Device Model	Latest Supported Release	Standalone Support
BR200-LTE-VZ End of Life	IQ Engine 6.5.12	<i>Not supported in ExtremeCloud IQ</i>
BR200WP End of Life	IQ Engine 6.9.7	
XR200P	IQ Engine 6.9.7	Platform support introduced with IQ Engine 6.9.2
XR600	IQ Engine 10.0.11	Platform support introduced with IQ Engine 9.0.1
XR600P	IQ Engine 10.0.11	Platform support introduced with IQ Engine 9.0.1
VGVA	IQ Engine 6.9.7	

ExtremeCloud IQ Site Engine

ExtremeCloud IQ Site Engine Version	Supported Features
22.09.13.5	<ul style="list-style-type: none"> • License allocation • Device Statistics • Port Statistics • Unmanage/Manage device • Device Group to CCG mapping • Open Site Engine with SSO
23.02.10	<ul style="list-style-type: none"> • License allocation • Device Statistics • Port Statistics • Unmanage/Manage device • Device Group to CCG mapping • Open Site Engine with SSO • Stack members
23.02.11	<ul style="list-style-type: none"> • License allocation • Device Statistics • Port Statistics • Unmanage/Manage device • Device Group to CCG mapping • Open Site Engine with SSO • Stack members
23.04.10	<ul style="list-style-type: none"> • License allocation • Device Statistics • Port Statistics • Unmanage/Manage device • Device Group to CCG mapping • Open Site Engine with SSO • Stack members

ExtremeCloud IQ Site Engine Version	Supported Features
23.04.11	<ul style="list-style-type: none"> • License allocation • Device Statistics • Port Statistics • Unmanage/Manage device • Device Group to CCG mapping • Open Site Engine with SSO • Stack members
23.04.12	<ul style="list-style-type: none"> • License allocation • Device Statistics • Port Statistics • Unmanage/Manage device • Device Group to CCG mapping • Open Site Engine with SSO • Stack members
23.07.10	<ul style="list-style-type: none"> • License allocation • Device Assignment to the ExtremeCloud IQ Location • Device Statistics • Port Statistics • Unmanage/Manage device • Device Group to CCG mapping • Open Site Engine with SSO • Stack members • NAC details update for wireless end-systems
23.07.11	<ul style="list-style-type: none"> • License allocation • Device Assignment to the ExtremeCloud IQ Location • Device Statistics • Port Statistics • Unmanage/Manage device • Device Group to CCG mapping • Open Site Engine with SSO • Stack members • NAC details update for wireless end-systems
23.07.12	<ul style="list-style-type: none"> • License allocation • Device Assignment to the ExtremeCloud IQ Location • Device Statistics • Port Statistics • Unmanage/Manage device • Device Group to CCG mapping • Open Site Engine with SSO • Stack members • NAC details update for wireless end-systems

ExtremeCloud IQ Site Engine Version	Supported Features
23.07.13	<ul style="list-style-type: none">• License allocation• Device Assignment to the ExtremeCloud IQ Location• Device Statistics• Port Statistics• Unmanage/Manage device• Device Group to CCG mapping• Open Site Engine with SSO• Stack members• NAC details update for wireless end-systems
23.11.10	<ul style="list-style-type: none">• License allocation• Device Assignment to the ExtremeCloud IQ Location• Device Statistics• Port Statistics• Unmanage/Manage device• Device Group to CCG mapping• Open Site Engine with SSO• Stack members• NAC details update for wireless end-systems
23.11.11	<ul style="list-style-type: none">• License allocation• Device Assignment to the ExtremeCloud IQ Location• Device Statistics• Port Statistics• Unmanage/Manage device• Device Group to CCG mapping• Open Site Engine with SSO• Stack members• NAC details update for wireless end-systems

ExtremeCloud IQ Site Engine Version	Supported Features
23.11.12	<ul style="list-style-type: none"> • License allocation • Device Assignment to the ExtremeCloud IQ Location • Device Statistics • Port Statistics • Unmanage/Manage device • Device Group to CCG mapping • Open Site Engine with SSO • Stack members • NAC details update for wireless end-systems
24.2.10	<ul style="list-style-type: none"> • License allocation • Device Assignment to the ExtremeCloud IQ Location • Device Statistics • Port Statistics • Unmanage/Manage device • Device Group to CCG mapping • Open Site Engine with SSO • Stack members • NAC details update for wireless end-systems

ExtremeCloud IQ CoPilot

ExtremeCloud IQ CoPilot Feature	Minimum Firmware				
	IQ Engine	Switch Engine	Fabric Engine	Extreme XOS	VOSS
WiFi Efficiency	10.5.2*	--	--	--	--
WiFi Capacity	10.5.2*	--	--	--	--
PoE Stability	10.5.2*	32.1	8.6	32.1	8.6
Port Efficiency	10.5.2**	31.7	8.6	31.7	8.6
DFS Recurrence	10.5.2*	--	--	--	--
Adverse Traffic Patterns	10.5.2*	31.7	8.6	31.7	8.6
Wireless Connectivity Experience	10.5.2	--	--	--	--
Wired Connectivity Experience	--	31.7	8.6	31.7	8.6

*beta support from 10.4

**beta support from 10.5.1

ExtremeCloud A3

ExtremeCloud A3 Version	Supported Features
5.0.1-4	<ul style="list-style-type: none"> • Licensing • Status Monitoring • SSO • Client Details

Supported Browsers and Display Settings

Desktop and Mobile Browser Support



Note

ExtremeCloud IQ does not support 32-bit browsers.

Table 4: Desktop Browsers

Desktop Browsers	Version Supported
Chrome	v116
Edge	v115
Firefox	v115
Internet Explorer	Not supported
Opera	v60
Safari	v13

Table 5: Mobile Browsers

Mobile Browsers	Version Supported
Android Webview	v73
Chrome for Android	v116
Edge	v79
Firefox for Android	v67
Opera for Android	v52
Safari for iOS	v13
Samsung Internet	Not supported

Display Settings

ExtremeCloud IQ supports display resolutions of 1280 x 1024 or higher.